



GAT MONTHLY MEMBERSHIP PROGRESS REPORT

Results as of: 7/31/2022

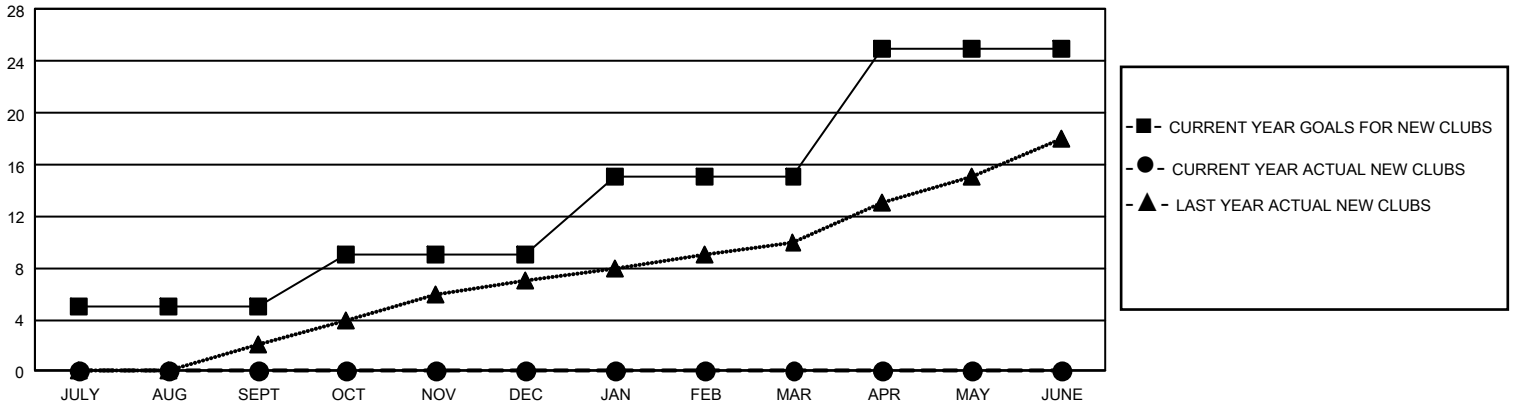
GMT Constitutional Area 4, Group B

REPORT DOES NOT INCLUDE CLUBS IN UNDISTRICTED AREAS.

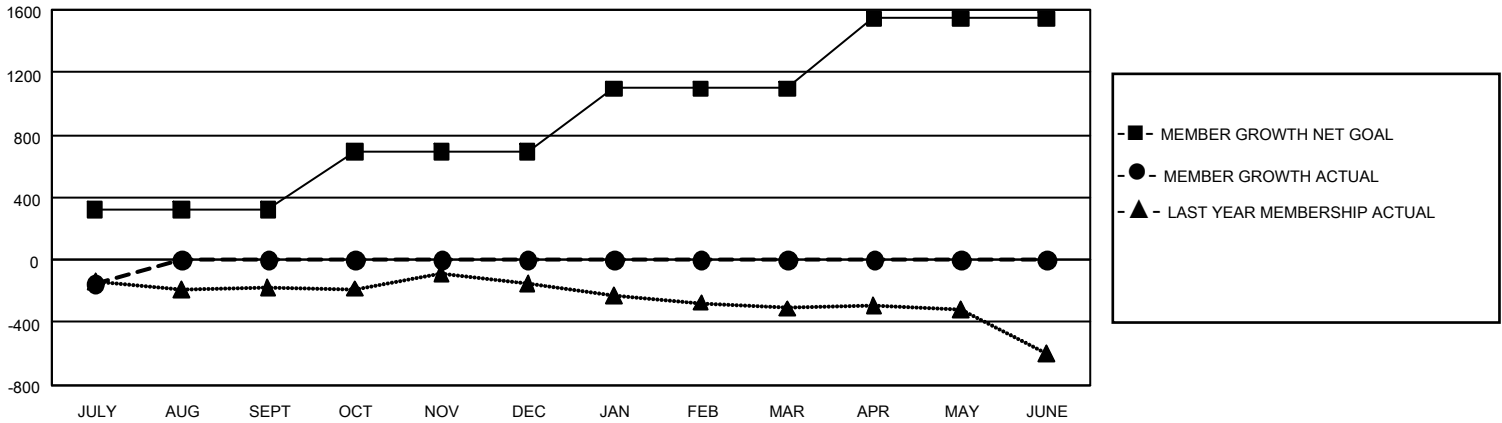
Clubs			
RESULTS FOR 2022-2023			
QUARTER	NEW CLUB GOAL	NEW CLUBS	DROPPED CLUBS
JULY/AUG/SEPT	15	0	2
OCT/NOV/DEC	12	0	0
JAN/FEB/MAR	18	0	0
APR/MAY/JUNE	30	0	0

Members			
RESULTS FOR 2022-2023			
QUARTER	MEMBER GROWTH NET GOAL	MEMBER GROWTH ACTUAL	DROPPED MEMBERS ACTUAL (including transfers)
JULY/AUG/SEPT	322	238	365
OCT/NOV/DEC	368	0	0
JAN/FEB/MAR	407	0	0
APR/MAY/JUNE	449	0	0

GOALS AND ACTUAL NEW CLUBS CUMULATIVE



GOALS AND ACTUAL MEMBERS CUMULATIVE



DROPPED CLUBS: 2 DROPPED MEMBERS DECEASED 60 CLUB CANCELLED 0 OTHER 306 TOTAL 366	157 CLUBS OF 2,117 ADDED 1 OR MORE NEW MEMBERS	GENDER DISTRIBUTION MALE 58,948 (84.04%) FEMALE 11,183 (15.94%) NON BINARY 0 (0.00%) PREFER NOT TO ANSWER 11 (0.02%)
	CLICK HERE FOR CUMULATIVE MEMBERSHIP DATA	TOTAL FAMILY UNIT MEMBERS 808 FAMILY MEMBERS PAYING HALF DUES 375